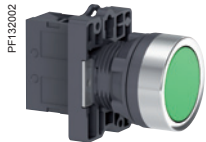


# Control and signaling units Ø 22

Harmony Easy XA2, plastic

Spring return pushbuttons, marked and unmarked

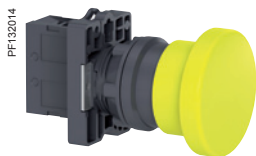
Mushroom head pushbuttons, spring return



XA2EA31



XA2EA4342



XA2EC51

## Spring return pushbuttons with flush push

Shape of head	Type of contacts		Color of push	Marking	Reference	Weight kg/lb
	N/O	N/C				
<b>Unmarked</b>						
	1	-	White	-	<b>XA2EA11</b>	0.032/0.071
			Black	-	<b>XA2EA21</b>	0.032/0.071
			Green	-	<b>XA2EA31</b>	0.032/0.071
			Yellow	-	<b>XA2EA51</b>	0.032/0.071
			Blue	-	<b>XA2EA61</b>	0.032/0.071
-	1	Red	-	<b>XA2EA42</b>	0.032/0.071	
<b>Marked</b>						
	1	-	Green	"I"	<b>XA2EA3311</b>	0.032/0.071
	1	-	Black	"↑"	<b>XA2EA3351</b>	0.032/0.071
	1	-	White	"↑"	<b>XA2EA3341</b>	0.032/0.071
	-	1	Red	"O"	<b>XA2EA4322</b>	0.032/0.071
	-	1	Red	"STOP"	<b>XA2EA4342</b>	0.032/0.071

## Mushroom head pushbuttons, spring return

Shape of head	Type of contacts		Color of push	Diameter Ø (mm)/in.	Reference	Weight kg/lb
	N/O	N/C				
	1	-	Black	40/1.575	<b>XA2EC21</b>	0.052/0.115
	1	-	Green	40/1.575	<b>XA2EC31</b>	0.052/0.115
	-	1	Red	40/1.575	<b>XA2EC42</b>	0.052/0.115
	1	-	Yellow	40/1.575	<b>XA2EC51</b>	0.052/0.115
	1	-	Black	60/2.362	<b>XA2ER21</b>	0.058/0.128

Note: Please refer to our website [www.schneider-electric.com](http://www.schneider-electric.com) for information on dimensions