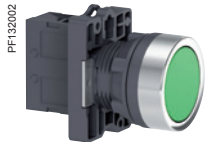


Control and signaling units Ø 22

Harmony Easy XA2, plastic

Spring return pushbuttons, marked and unmarked

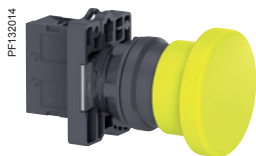
Mushroom head pushbuttons, spring return



XA2EA31



XA2EA4342



XA2EC51

Spring return pushbuttons with flush push

Shape of head	Type of contacts		Color of push	Marking	Reference	Weight kg/lb
	N/O	N/C				
Unmarked						
	1	-	White	-	XA2EA11	0.032/0.071
			Black	-	XA2EA21	0.032/0.071
			Green	-	XA2EA31	0.032/0.071
			Yellow	-	XA2EA51	0.032/0.071
			Blue	-	XA2EA61	0.032/0.071
-	1	Red	-	XA2EA42	0.032/0.071	
Marked						
	1	-	Green	"I"	XA2EA3311	0.032/0.071
	1	-	Black	"↑"	XA2EA3351	0.032/0.071
	1	-	White	"↑"	XA2EA3341	0.032/0.071
	-	1	Red	"O"	XA2EA4322	0.032/0.071
	-	1	Red	"STOP"	XA2EA4342	0.032/0.071

Mushroom head pushbuttons, spring return

Shape of head	Type of contacts		Color of push	Diameter Ø (mm)/in.	Reference	Weight kg/lb
	N/O	N/C				
	1	-	Black	40/1.575	XA2EC21	0.052/0.115
	1	-	Green	40/1.575	XA2EC31	0.052/0.115
	-	1	Red	40/1.575	XA2EC42	0.052/0.115
	1	-	Yellow	40/1.575	XA2EC51	0.052/0.115
	1	-	Black	60/2.362	XA2ER21	0.058/0.128

Note: Please refer to our website www.schneider-electric.com for information on dimensions