

Control and signaling units Ø 22

Harmony Easy XA2, plastic

Selector switches, with standard or long handle

Key switches

PF132031

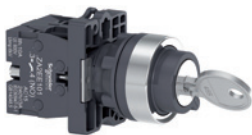


XA2ED53

Selector switches, with standard handle or with long handle

Shape of head	Type of push	Type of contacts		Number and type of positions	Reference	Weight kg/lb
		N/O	N/C			
	Standard handle	1	–	2 - stay put	XA2ED21	0.04/0.088
		1	1	2 - stay put	XA2ED25	0.054/0.119
		2	–	3 - stay put	XA2ED33	0.054/0.119
		2	–	3 - spring return from 2 sides	XA2ED53	0.054/0.119
		1	–	2 - spring return	XA2ED41	0.041/0.090
	Long handle	1	–	2 - stay put	XA2EJ21	0.041/0.090
		1	1	2 - stay put	XA2EJ25	0.041/0.090
		2	–	3 - stay put	XA2EJ33	0.055/0.121
		2	–	3 - spring return from 2 sides	XA2EJ53	0.055/0.121

PF132041



XA2EG03

Key switches

Shape of head	Type of push	Type of contacts		Number and type of positions	Reference	Weight kg/lb
		N/O	N/C			
	Key	1	–	2 - stay put, one side pull-out	XA2EG21	0.064/0.141
		2	–	2 - stay put, two sides pull-out	XA2EG43	0.078/0.172
		2	–	2 - spring return, one side pull-out	XA2EG63	0.078/0.172
		2	–	3 - spring return from 2 sides, middle pull-out	XA2EG73	0.078/0.172
		2	–	3 - stay put, middle pull-out	XA2EG33	0.078/0.172
		2	–	3 - stay put, 3 sides pull-out	XA2EG03	0.078/0.172

Note: Please refer to our website www.schneider-electric.com for information on dimensions